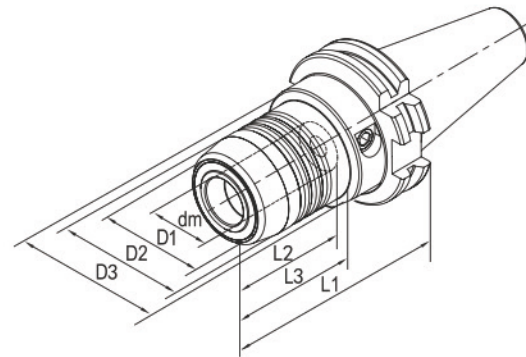
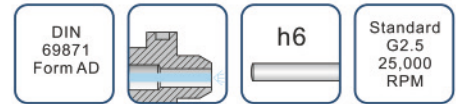


## HYDRAULIC EXPANSIONS CHUCK

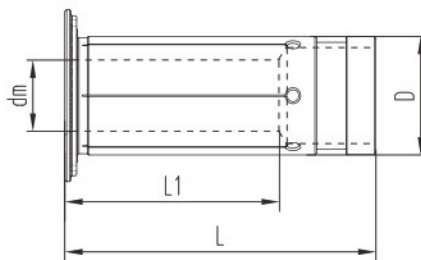
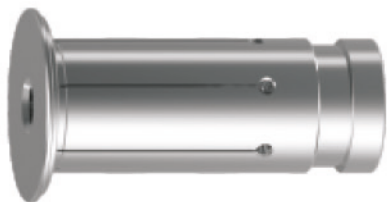
- Super transmitted torque for high clamping reliability.
- Radial run-out less than  $3\mu$  (system accuracy at 4xd)
- For clamping cutting tools with cylinderic shank tolerance h6
- Flexible clamping range due to use of reducing sleeve for Various shank.
- Axial length adjustment available and max. adjustment travel 10mm.
- Ideal damping characteristics, resulting in optimum surface finish, increase cutter life time and spindle protection.



Order No.	Modle	Shank	Size(mm)							Screw	Screw wrench	for Collets
			dm	D1	D2	D3	L1	L2	L3			
132-01-401	JT40-HCM06-80.5	SK40-AD	6	22	26	50	80.5	37	29.5	HCS005014C	TS5	-
132-01-402	JT40-HCM08-80.5	SK40-AD	8	24	28	50	80.5	37	30	HCS006014C	TS5	-
132-01-403	JT40-HCM10-80.5	SK40-AD	10	26	30	50	80.5	41	31	HCS008014C	TS5	-
132-01-404	JT40-HCM12-80.5	SK40-AD	12	28	32	50	80.5	46	31.5	HCS008014C	TS5	HC12
132-01-405	JT40-HCM16-80.5	SK40-AD	16	34	38	50	80.5	49	33	HCS008014C	TS5	-
132-01-406	JT40-HCM20-80.5	SK40-AD	20	38	42	50	80.5	51	34	HCS008014C	TS5	HC20
132-01-407	JT40-HCM25-80.5	SK40-AD	25	53	55	66	80.5	57	22	HCS012014C	TS6	-
132-01-408	JT40-HCM32-80.5	SK40-AD	32	60	63	80	80.5	61	25.5	HCS012014C	TS6	HC32
132-01-501	JT50-HCM06-80.5	SK50-AD	6	22	26	50	80.5	37	29.5	HCS005014C	TS5	-
132-01-502	JT50-HCM08-80.5	SK50-AD	8	24	28	50	80.5	37	30	HCS006014C	TS5	-
132-01-503	JT50-HCM10-80.5	SK50-AD	10	26	30	50	80.5	41	31	HCS008014C	TS5	-
132-01-504	JT50-HCM12-80.5	SK50-AD	12	28	32	50	80.5	46	31.5	HCS008014C	TS5	HC12
132-01-505	JT50-HCM16-80.5	SK50-AD	16	34	38	50	80.5	49	34	HCS008014C	TS5	-
132-01-506	JT50-HCM20-80.5	SK50-AD	20	38	42	50	80.5	51	34	HCS008014C	TS5	HC20
132-01-507	JT50-HCM25-80.5	SK50-AD	25	53	57	66	80.5	57	34	HCS012014C	TS6	-
132-01-508	JT50-HCM32-80.5	SK50-AD	32	60	64	72	80.5	61	34	HCS012014C	TS6	HC32

## REDUCING SLEEVE FOR HYDRAULIC EXPANSIONS CHUCK

- Radial run-out less than 5 $\mu$ .
- For clamping cutting tools with cylindric shank tolerance h6.



Order No.	Model	Size (mm)			
		dm	D	L1	L
100-01-001	HC12-3	3	12	16.5	47.5
100-01-002	HC12-4	4	12	16.5	47.5
100-01-003	HC12-5	5	12	16.5	47.5
100-01-004	HC12-6	6	12	24	47.5
100-01-005	HC12-8	8	12	25.5	47.5
100-01-006	HC20-3	3	20	17.5	52.5
100-01-007	HC20-4	4	20	17.5	52.5
100-01-008	HC20-5	5	20	17.5	52.5
100-01-009	HC20-6	6	20	25.5	52.5
100-01-010	HC20-7	7	20	28	52.5
100-01-011	HC20-8	8	20	28	52.5
100-01-012	HC20-9	9	20	32.5	52.5
100-01-013	HC20-10	10	20	32.5	52.5
100-01-014	HC20-11	11	20	36	52.5
100-01-015	HC20-12	12	20	36	52.5
100-01-016	HC20-13	13	20	36.5	52.5
100-01-017	HC20-14	14	20	37	52.5
100-01-018	HC20-15	15	20	37	52.5
100-01-019	HC20-16	16	20	37.5	52.5
100-01-020	HC32-6	6	32	25.5	63.5
100-01-021	HC32-8	8	32	27.5	63.5
100-01-022	HC32-10	10	32	30.5	63.5
100-01-023	HC32-12	12	32	30.5	63.5
100-01-024	HC32-14	14	32	32.5	63.5
100-01-025	HC32-16	16	32	40.5	63.5
100-01-026	HC32-18	18	32	40.5	63.5
100-01-027	HC32-20	20	32	40.5	63.5
100-01-028	HC32-25	25	32	48.5	63.5

## HYDRAULIC EXPANSIONS CHUCK SET

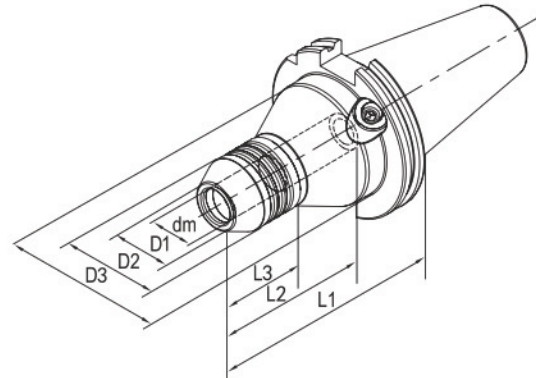
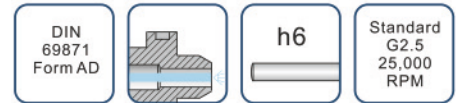
- each set including 1pc each of SK40-AD hydraulic expansion chuck,HC20-6,HC20-8,HC20-10,HC20-12,HC20-16 (internal dia:6,8,10,12,16mm) reducing sleeve and screw wrench,pack in strong aluminium box.



ORDER NO.132-01-S04

## PRECISION HYDRAULIC EXPANSIONS CHUCK

- Used on CNC tool grinding machine for grinding/sharpening of drill, reamer, end mill etc.
- High precision and Radial Run-out not more than  $2\mu$  at 4d checking point.
- Super transmitted torque for high clamping reliability.
- For clamping cylindric shank tolerance h6.
- Axial length adjustment available and max. adjustment travel 10mm.
- Can be operated frequently long time and keep good repeatability.



Order No.	Modle	Shank	Size(mm)							Wrench	for Collets
			dm	D1	D2	D3	L1	L2	L3		
132-01-001	JT50-HCM12-110M	SK50-AD	12	21.5	36.5	60	110	50	55	TS5	HC12..M
132-01-002	JT50-HCM20-110M	SK50-AD	20	28	42	70	110	95	47	TS5	HC20..M
132-01-003	JT50-HCM32-110M	SK50-AD	32	40	54	70	110	95	62.5	TS5	HC32..M

## PRECISION REDUCING SLEEVE FOR HYDRAULIC CHUCK

- Radial run-out less than  $3\mu$ .
- Used for grinding/sharpening of drill, reamer, end mill etc.
- For clamping cutting tools with cylindric shank tolerance h6



Order No.	Modle	Size (mm)			
		dm	D	L1	L
100-01-101	HC12-3M	3	12	16.5	47.5
100-01-102	HC12-4M	4	12	16.5	47.5
100-01-103	HC12-5M	5	12	16.5	47.5
100-01-104	HC12-6M	6	12	24	47.5
100-01-105	HC12-8M	8	12	25.5	47.5
100-01-106	HC20-3M	3	20	17.5	52.5
100-01-107	HC20-4M	4	20	17.5	52.5
100-01-108	HC20-5M	5	20	17.5	52.5
100-01-109	HC20-6M	6	20	25.5	52.5
100-01-110	HC20-7M	7	20	28	52.5
100-01-111	HC20-8M	8	20	28	52.5
100-01-112	HC20-9M	9	20	32.5	52.5
100-01-113	HC20-10M	10	20	32.5	52.5
100-01-114	HC20-11M	11	20	36	52.5
100-01-115	HC20-12M	12	20	36	52.5
100-01-116	HC20-13M	13	20	36.5	52.5
100-01-117	HC20-14M	14	20	37	52.5
100-01-118	HC20-15M	15	20	37	52.5
100-01-119	HC20-16M	16	20	37.5	52.5
100-01-120	HC32-6M	6	32	25.5	63.5
100-01-121	HC32-8M	8	32	27.5	63.5
100-01-122	HC32-10M	10	32	30.5	63.5
100-01-123	HC32-12M	12	32	30.5	63.5
100-01-124	HC32-14M	14	32	32.5	63.5
100-01-125	HC32-16M	16	32	40.5	63.5
100-01-126	HC32-18M	18	32	40.5	63.5
100-01-127	HC32-20M	20	32	40.5	63.5
100-01-128	HC32-25M	25	32	48.5	63.5

